

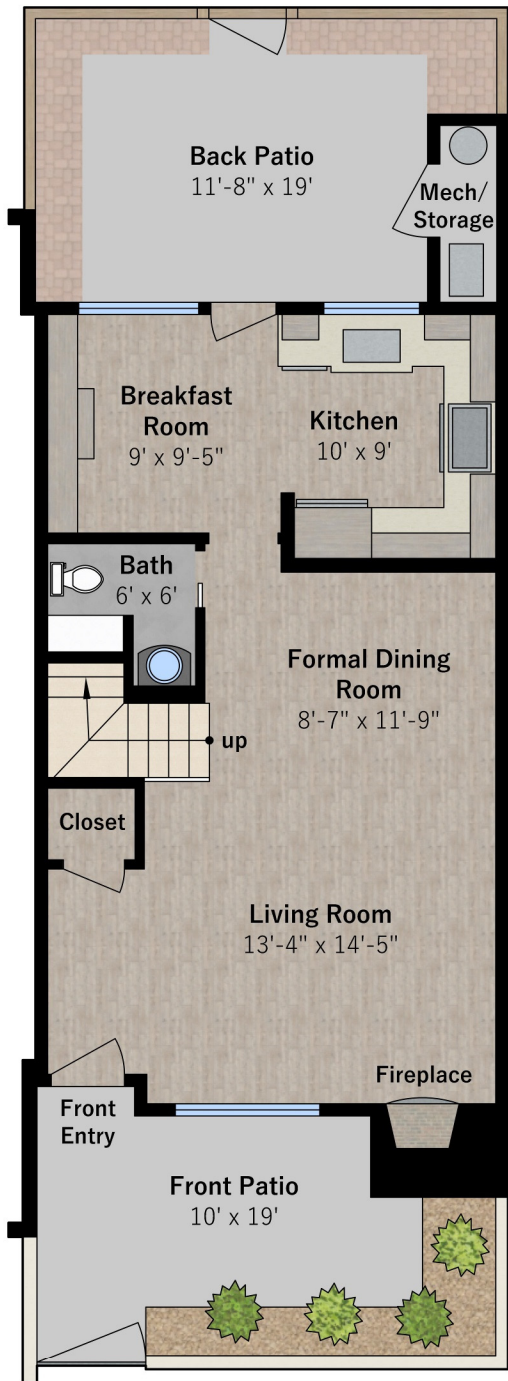


582 Churchill Downs Ct.
Walnut Creek, CA 94597

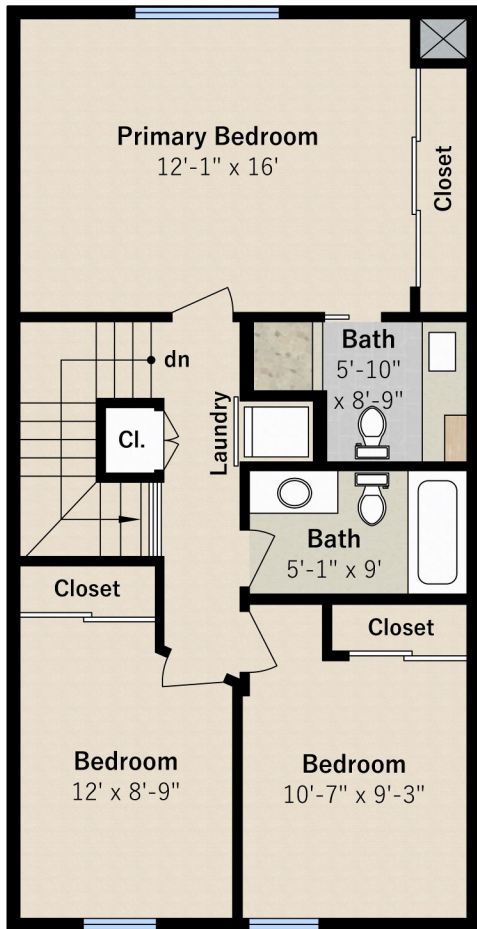
Estimated Total Finished
Square Footage: 1,350 sqft
Lower Level: 640 sqft
Upper Level: 710 sqft

Estimated Total Unfinished
Square Footage: 30 sqft
Storage/Mech Room: 30 sqft

Interior room dimensions are shown, but all square footage is calculated from the outside perimeter of exterior walls. Balconies, porches, and patios are not included in calculations.
Measured on May 27th, 2022



Lower Level
approx. 640 sqft



Upper Level
approx. 710 sqft

Any and all information on this drawing is for illustrative purposes only and is deemed reliable, but not guaranteed. All information requires independent verification.

Listed By: Ken Jacobs
Clocktower Realty Group | www.cloctowerrealty.com



COMPASS

582 Churchill Downs Ct, Walnut Creek

3 Bedrooms | 2 1/2 Baths | 1348 Sq Ft. | Listed for \$900,000



Gorgeous Renovated Walnut Creek Townhouse

This meticulously maintained and upgraded two story townhouse sits in an outstanding location in the complex, looking out on a greenbelt area. Through the front gate and private patio to the entrance, you'll be greeted by an inviting living room with elegant tile flooring and an impressive custom gas fireplace with remote control. Just past the dining area is a convenient and modern 1/2 bath with glass pedestal sink. A gourmet kitchen awaits you next with modern cabinetry, stylish quartz countertops, beautiful glass tile backsplash and high-end appliances including a Jenn-Aire cabinet depth refrigerator, hybrid electric/induction glass ceramic cooktop, Thermador oven and a Fisher/Paykel dual drawer dishwasher. Additional cabinetry has been added for abundant storage along with a separate built-in wine refrigerator. The kitchen opens to a quaint and private, shaded rear patio, perfect for open-air dining.

As you make your way upstairs to the bedrooms, you'll encounter a sliding barn door screening a premium quality stacked washer/dryer and a skylight filling the upstairs with natural light. The sizeable primary suite includes generous closet space with mirrored closet doors and a beautifully renovated primary bath with floating stained cabinetry and a sleek tiled shower with dual showerheads. The hall bath has been nicely updated with a refreshed vanity and refined fixtures and finishes. Both upstairs bathrooms feature skylights as well.

Included is an assigned space in the secured underground parking garage, along with a permit for an additional unassigned space in the parking lot. The parking garage is accessed from a private walkway behind the rear patio of the townhouse with a staircase into the garage. The HOA also includes access to a community pool and tennis courts. HOA dues are currently \$531 monthly.



Ken Jacobs
Broker Associate

925.280.1260
ken@ClocktowerRealty.com
DRE # 01242343



COMPASS



Property Features

- 3 bedrooms, 2 1/2 baths, approximately 1348 sq ft (according to public records)
- Living area w/elegant tile flooring, custom gas fireplace and dining area
- Beautifully renovated kitchen with modern cabinetry, upscale appliances, quartz counters and stylish glass tile backsplash
- Large primary suite includes abundant closet space and renovated bath with floating cabinetry & impressive tile shower
- Private front and rear patios
- One assigned parking space in secured underground garage and one permit for an additional, unassigned space in the lot.
- Convenient to downtown Walnut Creek, BART and freeway access.
- HOA features include a community pool, tennis courts and greenbelt areas
- Highly rated Walnut Creek schools include Buena Vista Elementary, Walnut Creek Intermediate and Las Lomas High School (please verify availability w/school district)
- HOA Dues \$531 monthly

Offered at \$900,000



www.582ChurchillDownsCt.com

All Material presented here in is intended for informational purpose only. Information is compiled from sources deemed reliable but has not been verified. No Statement is made as to the accuracy of any description. All measurements and square footages are approximate. Exact dimensions can be obtained by retaining the services of an architect or engineer.